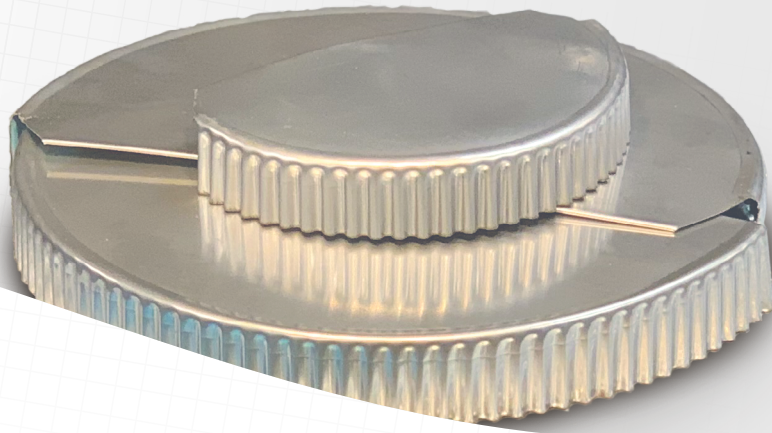


PRECISION FIT

FABRICATED END CAPS ALUMINUM



PRODUCT DESCRIPTION

Ideal Products' Aluminum precision fabricated 2-piece end caps are CAD designed and CNC cut to ensure a proper fit per ASTM C585 standards. The standard material for aluminum is 0.020" 3003 clear coat exterior with a painted moisture barrier interior or with a polyfilm moisture barrier. Because these are custom made, they can be fabricated from any stocked material and thickness, smooth or embossed, to meet your project specifications. End caps have a standard 1/2" to 3/4" crimped flange, and have a center hem for added support and safety. Where a longer flange is required, Pittsburgh end caps with a 3" flange are fabricated for diameters of 8.625" and up. Fabrication materials meet ASTM B209.

PRODUCT APPLICATION

Aluminum precision fabricated end caps are mainly used to provide physical damage resistance, corrosion resistance, fire resistance, UV protection, and to help prevent liquid water from entering the insulation system. Typical, but not limited to, applications include piping terminations, pipe flanges, valves, and other custom mechanical insulation profiles where end caps are utilized as a component of the insulation system.

PHYSICAL PROPERTIES

FINISHES

SMOOTH PLAIN MILL | STUCCO EMBOSSED

COLORS

A large variety of colored exterior finishes can be added to Aluminum Roll Jacketing for desired preferences or to reach specific emissivity levels. Please refer to Ideal Products standard color chart below for reference. Other colors are available upon request.

PAINT COLORS



Color chips shown are standard colors and may not represent an exact match, painted metal samples and custom colors are available upon request.

RECOMMENDED APPLICATION THICKNESSES

ALUMINUM PIPE JACKETING *min. thickness**

OUTER INSULATION DAIMETER (in)	MINIMUM THICKNESS (in)	
	RIGID Insulation	NON-RIGID Insulation
≤ 8	0.016	0.016
over 8 – 11	0.016	0.020
over 11 – 24	0.016	0.024
over 24 – 36	0.020	0.032
over 36	0.024	0.040

*as per ASTM C1729

MATERIAL SPECIFICATIONS

ALLOY	3003/3105
TEMPERS	H14/H24
THICKNESSES	0.016", 0.020", 0.024", 0.032"
MOISTURE BARRIERS	Painted or Factory Applied Co-extruded 3 mil Polyethylene Film
MELTING POINTS	Aluminum: 660 °C (1220 °F) Polyfilm: 105 °C to 115 °C (221 °F to 239 °F)
ASTM E84 Flame Spread/Smoke Development	25/50 or Less
ASTM C1371 Surface Emittance	> 0.04 New; 0.1 Oxidized in Service; > 0.5 Clear Coat Exterior > 0.8 Pigmented Paint
ASTM C1729	Type I, II & III, Grade 1, Class A, D

Safer. Smarter. Faster.

CANADA 1.800.299.0819 | USA 1.888.877.7685 | WWW.IDEALPRODUCTS.CA

