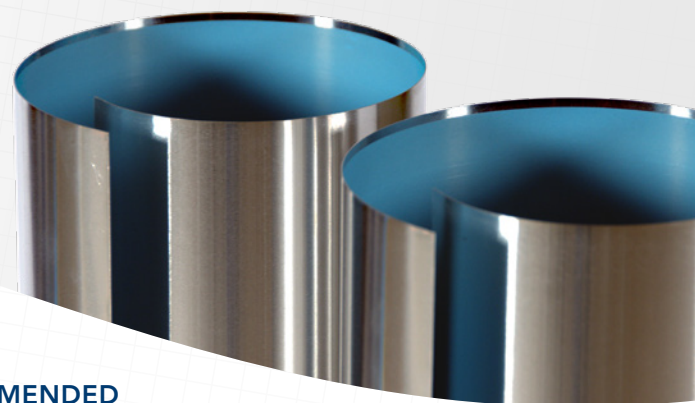


# CLEAR COATED ALUMINUM ROLL JACKETING

WITH POLYFILM MB (PFMB)



## PRODUCT DESCRIPTION

A premium choice protection for outer surfaces of mechanical insulation systems, Ideal Products Aluminum Roll Jacketing with Polyfilm Moisture Barrier (PFMB) and polyester coating is produced from 3003 and 3105 series aluminum, meeting ASTM B-209 standards. The interior of this product is lined with a factory applied 3 mil thick co-extruded polyethylene film, while the exterior finish is with a heat cured factory applied polyester clear coating. The interior film is laminated to the aluminum sheet by a process of heat and pressure designed to be a highly effective moisture barrier. The exterior finish of an epoxy bond then heat cured polyester coating provides extra protection in corrosive ambient environments while also adding to the prevention of oxidation and resistance to the dulling of the aluminum.

## PRODUCT APPLICATION

Ideal Products Painted Aluminum Roll Jacketing with PFMB is manufactured to be used in various cladding applications particular to mechanical insulation systems. The metal can be cut and rolled to fit around straight pipe, bends, and vessels, or fabricated into various other cladding applications like beveled collars, endcaps, and gored peels including tank heads. Ideal Painted Aluminum Roll Jacketing with PFMB is a premium suited choice for protecting the insulation and underlying pipe or tank from corrosive ambient conditions, UV exposure, water, physical damage, or to increase emittance. For greater levels of corrosion resistance, Ideal Products SST jacketing should be used. To select the correct or best suited type of cladding for your application, please refer to Ideal Products metal jacketing application guidelines, or ASTM C1729 and ASTM C1767.

## PHYSICAL PROPERTIES

### FINISHES

SMOOTH PLAIN MILL | STUCCO EMBOSSED | CROSS CRIMP

### COLORS

A large variety of colored exterior finishes can be added to Aluminum Roll Jacketing for desired preferences or to reach specific emissivity levels. Please refer to Ideal Products standard color chart below for reference. Other colors are available upon request.

### PAINT COLORS



Color chips shown are standard colors and may not represent an exact match, painted metal samples and custom colors are available upon request.

## RECOMMENDED APPLICATION THICKNESSES

### ALUMINUM PIPE JACKETING *min. thickness\**

OUTER INSULATION DAIMETER (in)	MIN. ALLOWABLE THICKNESS (in)	
	RIGID Insulation	NON-RIGID Insulation
≤ 8	0.016	0.016
over 8 – 11	0.016	0.020
over 11 – 24	0.016	0.024
over 24 – 36	0.020	0.032
over 36	0.024	0.040

\*as per ASTM C1729

## MATERIAL SPECIFICATIONS

ALLOYS	3003, 3105
TEMPERS	H14, H24
THICKNESSES	0.016", 0.020", 0.024", 0.032", 0.040"
MOISTURE BARRIERS	Factory Applied Co-extruded 3 mil Polyethylene Film
EXTERIOR COATING	Clear; Factory Applied Heat Cured Polyester Paint
MELTING POINT	660 °C (1220 °F)
ASTM E84 Flame Spread/Smoke Developmentw	25/50 or less
ASTM C1371 Surface Emittance	Clear Coat: > 0.5
ASTM C1729	Type III, Grade I, Class A

**Safer. Smarter. Faster.**