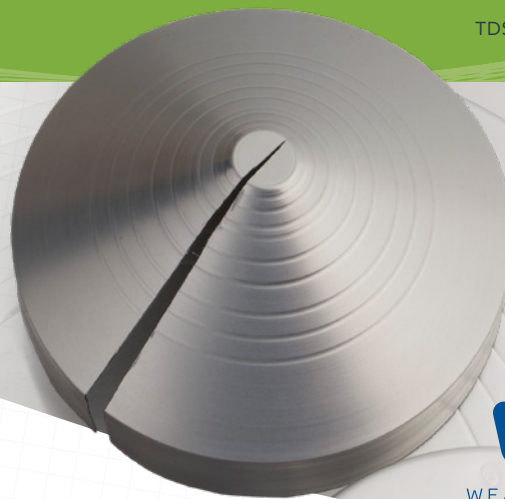


ALUMINUM BEVELS

WEATHERJACS®



WEATHERJACS®

PRODUCT DESCRIPTION

Ideal Products' Aluminum WeatherJacs® bevels are produced from 1100 series Aluminum, meeting ASTM B-209 standards. 1100 aluminum alloy is among the commercially pure wrought family (1000 or 1xxx series). With a minimum of 99.0% aluminum, it is the most heavily alloyed of the 1000 series. It is also the mechanically strongest alloy in the series. At the same time, it keeps the benefits of being relatively lightly alloyed (compared to other series), such as high electrical conductivity, thermal conductivity, corrosion resistance, and workability.

WeatherJacs® bevels are precision-formed in a state of the art; computer controlled process, which produces a formed one pieced, hinged cap complete with sizing labels and an extended ¾" to 1" collar. All WeatherJacs® bevels are dimensionally formed in conformance to ASTM C-585 and C450 tolerances. WeatherJacs® come with a factory applied; heat cured, clear polyester or acrylic or coating on the interior for a high performance moisture barrier. The same coating is also applied to the exterior to help resist oxidation and corrosion.

PRODUCT APPLICATION

WeatherJacs® bevels are designed for cladding various terminations and penetrations. Fittings shall be secured by the use of strapping, screws, or rivets. The amount of straps, screws or rivets, is dependent on the size of the fitting. For the best protection it is recommended that appropriate joint sealant be used on all overlaps when installing WeatherJacs®.

For more specific guidelines to aluminum cladding for insulation, please refer to ASTM C1729.

For applications where maximum corrosion resistance, elevated temperatures, or fire ratings are required, Ideal Products stainless steel bevels should be used.

PHYSICAL PROPERTIES

FINISHES

SMOOTH MILL

Generally a standard finish with a dull smooth look, while also best suited for water shed and ease of cleaning the surface.

COLORS

A large variety of colored exterior finishes can be added to Ideal Products WeatherJacs® to enhance the appearance of the finished product. Please contact your local representative for color availability.

SIZING

Ideal Products WeatherJacs® Bevels are formed to follow ASTM C-585 & C-450 dimensional standards. Available sizes range from #1 through #24 providing over 15,000 size combinations.

PRODUCT COMPLIANCES SUMMARY

ASTM B 209	Standard Specification for Aluminum and Aluminum-Alloy Sheet and Plate	Conforms
ASTM C 585	Standard Practice for Inner and Outer Diameters of Thermal Insulation for Nominal Sizes of Pipe Tubing	Conforms
ASTM C 450	Standard Practice for Fabrication of Thermal Insulating Fitting Covers for NPS Piping, and Vessel Lagging	Conforms
ASTM C1729 5.1.2.3; 5.1.3.3; 10.5.1	Standard Specification for Aluminum Jacketing for Insulation Grade 3, Alloy 1100, Dead Soft Temper Class D, Painted Moisture Barrier Pressed Fittings	Conforms
ASTM C1729 10.5.2.2	Grade 3; Thickness, 0.024"(0.6mm)	Conforms
ASTM E84	Flame Spread/Smoke Development	25/50 or less
ASTM C1371	Surface Emittance	0.5

Safer. Smarter. Faster.



IDEAL PRODUCTS